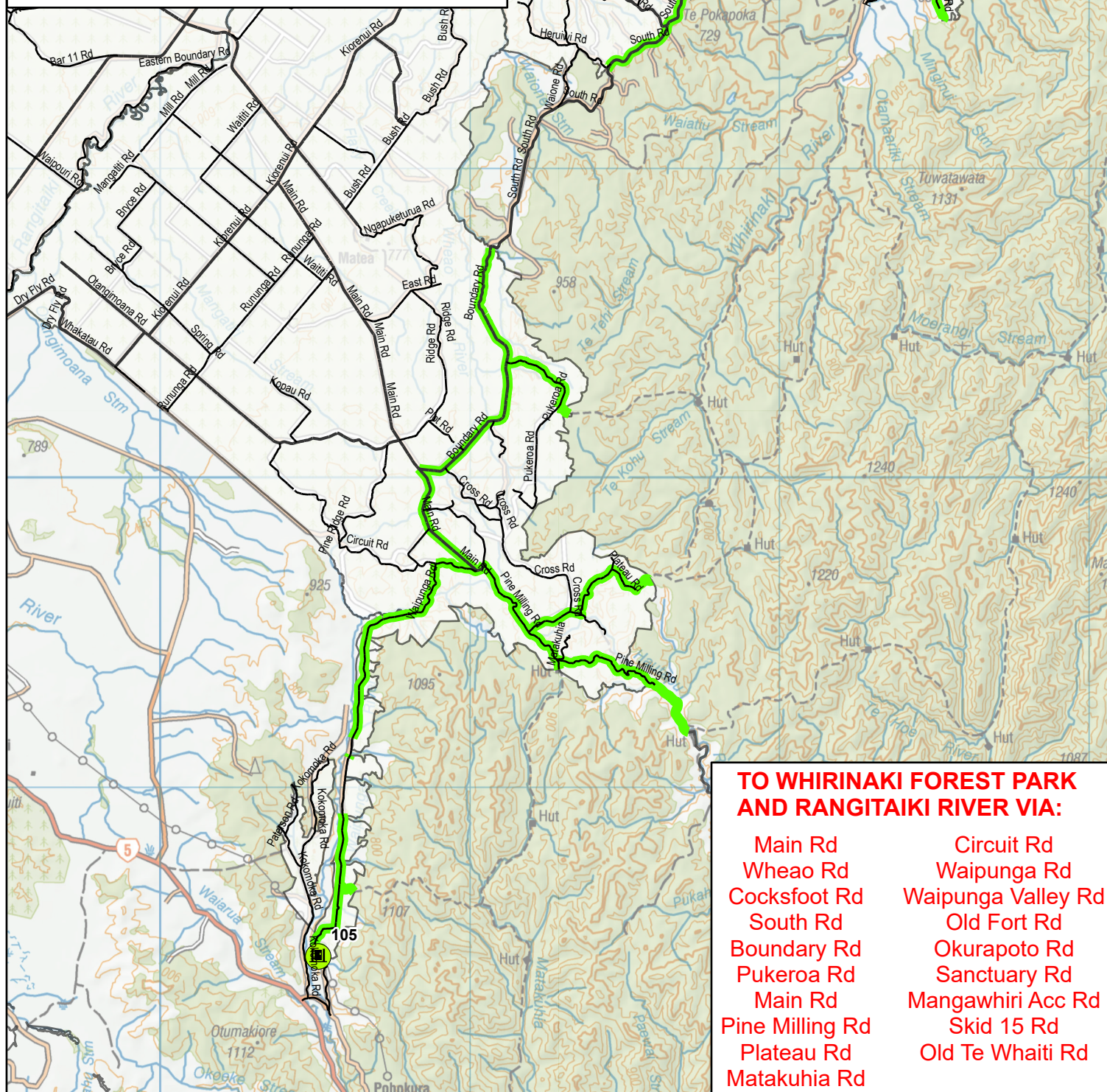


## DRIVE TO THE CONDITIONS

Public and forestry vehicles  
share these roads.

Drive at a speed so that you can  
stop in half the visible distance.



### KAINGAROA FOREST

#### Whirinaki Forest Park Public Access Easements



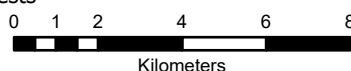
Access Gates



Forests

Public Access

Easements Roads



Note: Gates may be locked at any time for operational and risk reasons

N



Scale: 1:180,000

**DAYLIGHT HOURS ONLY. ACCESS ON FOOT, HORSE, BICYCLE, MOTORCYCLE OR LIGHT MOTOR VEHICLE.  
NO STOPPING, HUNTING OR SHOOTING ON THESE ROADS. NO ACCESS TO OTHER ROADS WITHOUT A VALID PERMIT.**