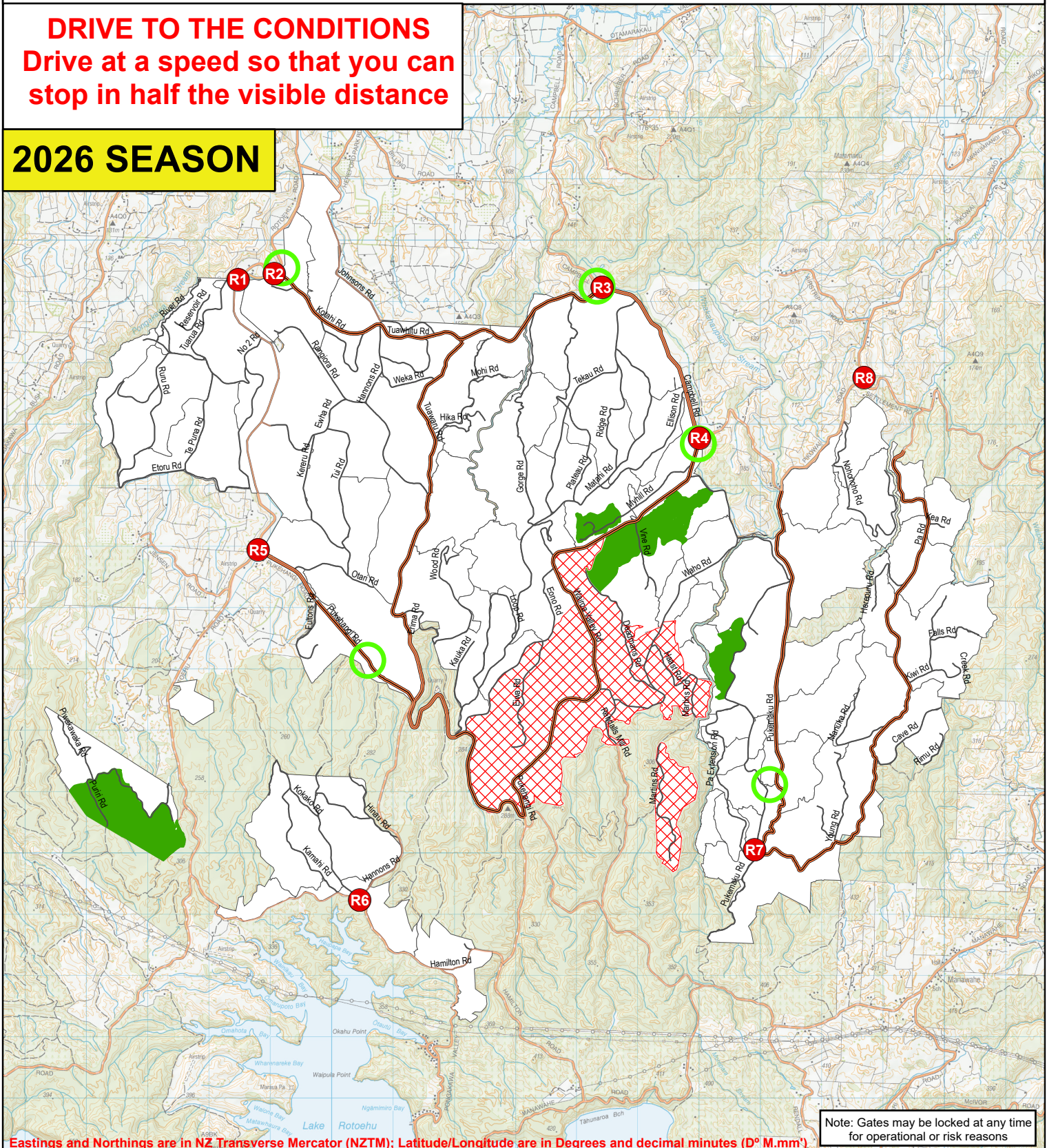


ROTOEHU RECREATIONAL USER ACCESS, POISON AREAS AND EMERGENCY MEETING POINTS

Access by Permit only

DRIVE TO THE CONDITIONS
 Drive at a speed so that you can stop in half the visible distance

2026 SEASON



Note: Gates may be locked at any time for operational or risk reasons

Eastings and Northings are in NZ Transverse Mercator (NZTM); Latitude/Longitude are in Degrees and decimal minutes (D° M.mm')

EMP	Easting	Northing	Road Intersections	Latitude	Longitude
R1	1908476	5799354	Rotoehu / Tuarua	37° 54.065' S	176° 30.495' E
R2	1909064	5799449	Rotoehu / Kotahi	37° 54.002' S	176° 30.893' E
R3	1914412	5799227	Campbell / Tuawhitu	37° 54.012' S	176° 34.542' E
R4	1916002	5796770	Campbell / Wairoa	37° 55.305' S	176° 35.689' E
R5	1908801	5794945	Rotoehu / Pukehangi	37° 56.439' S	176° 30.830' E
R6	1910457	5789229	Pongakawa Valley / Hannons	37° 59.490' S	176° 32.107' E
R7	1916901	5790051	Pukemaku / Pa	37° 58.913' S	176° 36.479' E
R8	1918690	5797755	Pikowai / Settlement	37° 54.717' S	176° 37.495' E

- EMPS
- Open Gates
- NO HUNTING AREAS
- Compartments
- State Highways
- External Roads
- Arterial/No Hunting Roads - Speed Limit 80 km/hr
- Forest Roads - Speed Limit 30 km/hr

Poison Operation: Pindone and Feratox

0 0.5 1 2 3
Kilometers

N
Scale: 1:85,000